

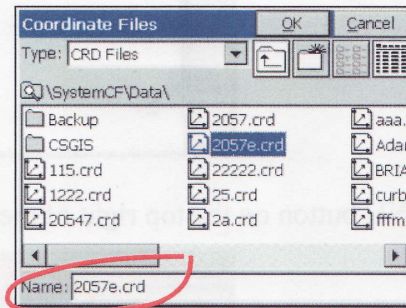
Quick and easy guide to laying out points with the GPS handheld unit

Switch on the machine – ProMark 3 will load

Double –click FAST SURVEY

Select New/Existing Job

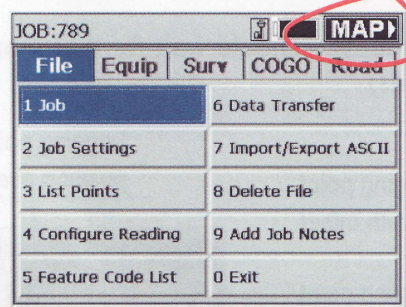
Give the new job a name
Then select OK



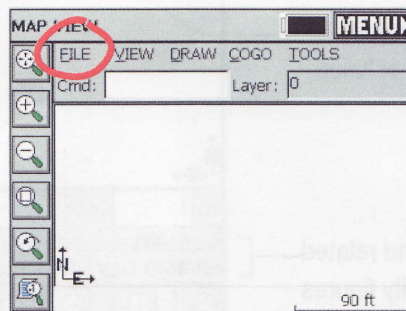
Now select the GPS tab and make sure it is on the **ING SSH** projection and not the ITM SSH. Change it if necessary



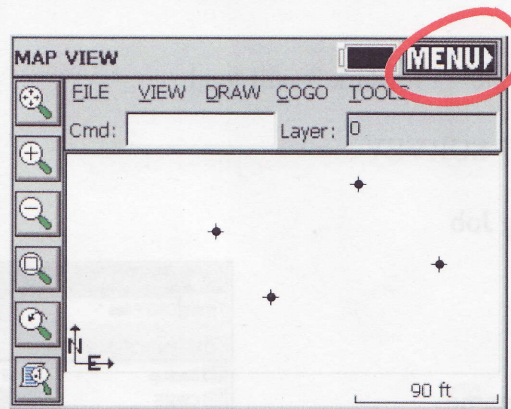
Now click on the MAP button on the top right of the screen



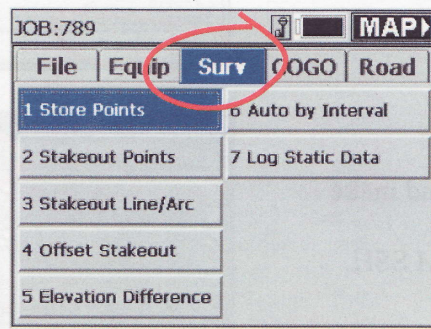
You are now on the MAP screen.
Select FILE then DXF FILE
Now IMPORT DXF
Select the relevant DXF file
Select OK



Now the DXF file should appear on the screen with the relevant points shown which need staking out (i.e the ends of the proposed test trenches).



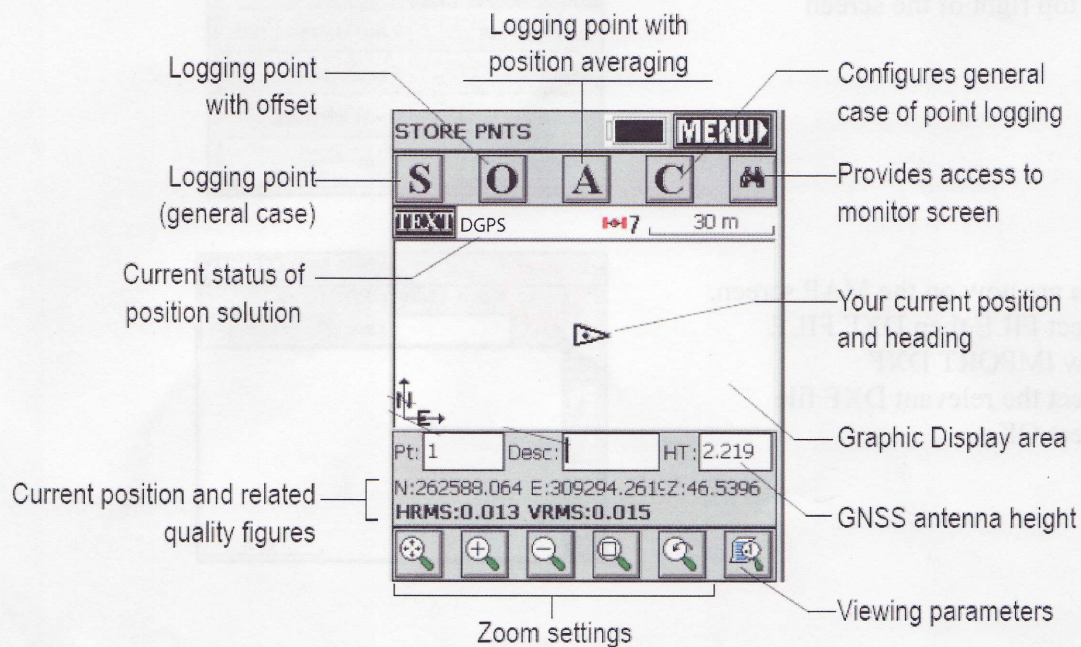
Select the **MENU** button on the top right of the screen



Select the **Surv** tab
Select **Store Points**

On the Store Points screen you will see the information from the DXF file once you are in the vicinity of the survey area. Decide which point you will survey first and walk until the dot/cross for that point is in the centre of the screen beneath the central arrow.

Before staking out you should wait for **Autonomous** to change to **DGPS** (this can sometimes take upto 15mins)



Use the zoom command to zoom in on the point to make sure you are as near as